

Newsletter No 34, 2021

Thursday 4th November, 2021



Address: Gaol Rd, Bendigo 3552
Phone: 5443 3367

Purpose of Camp Hill Primary School is to develop and nurture lifelong learners within an engaging, global learning community, where the uniqueness and contributions of individuals are valued, shared and celebrated.

Following are the **core values** in which we strongly believe; they underpin our purpose and are the guiding principles of our school.

Caring: Being kind, helpful and sympathetic toward other people.

Honesty: To always tell the truth.

Confidence: Believing in yourself and others.

Respect: Recognising the rights, feelings, wishes and individual differences of others through our speech and manners.

Trust: Safely express opinions, beliefs, thoughts, and feelings in a secure environment.

Email Address: camp.hill.ps@education.vic.gov.au

Web Address: www.camphillps.vic.edu.au

Calendar 2021

Wednesday	10 th , 17 th , 24 th	Grow Cup Stall every Wednesday at School, 3:00pm
Wednesday	10 th November	CHPS Parents' Club Webex 5:30pm
Friday	12 th November	Jets Gym – Prep. 10:30 – 11:30
Saturday	13 th November	Grow Cup Plant Sale – Bendigo Farmers Market Cancelled
Monday	15 th November	Assessment & Report Writing Day - PUPIL FREE DAY
Tuesday	16 th November	School Council meeting 5:30pm
Wednesday	17 th November	Grow Cup Stall every Wednesday at School, 3:00pm
Friday	19 th November	Jets Gym – Prep. 10:30 – 11:30
Wednesday	24 th November	Grow Cup Stall every Wednesday at School, 3:00pm
Friday	26 th November	Jets Gym – Prep. 10:30 – 11:30
Monday	6 th December	2022 Edplus Booklist online orders due (\$5 late fee applies after this day)
Tuesday	14 th December	Grade 6 Graduation TBC
Wednesday	15 th December	School Council meeting & Dinner
Friday	17 th December	Last day term 4 – Early dismissal – 1:30pm
Thursday	20 th January 2022	2022 Edplus booklist collection day 9am – 4pm
Friday	21 st January 2022	2022 Edplus booklist collection day 9am – 12noon
Wednesday	26 th January	PUBLIC HOLIDAY - AUSTRALIA DAY
Friday	28 th January 2022	Teachers/Staff start school
Monday	31 st January 2022	Grades 1-6 Students Start-Up Interview Day – 15mins ONLY
Tuesday	1 st February 2022	Grades 1-6 1 st FULL DAY of school
Thursday	3 rd February 2022	Foundation Students 1 st FULL DAY of school
Wednesday	9 th February 2022	Foundation Students – NO SCHOOL (every Wednesday month of Feb)

PRINCIPAL'S REPORT

Prep's and Staff Return to School

It was great to have all of Preps back on-site this week. A big thankyou to staff, students and parents who were so proactive in following the COVID guidelines, ensuring our Preps could return to school as quickly as possible.

Parents' Club

This is an invitation to all parents and carers to attend a WebEx meeting with the purpose of establishing a parents' club at Camp Hill Primary School. This initiative will provide the opportunity for parents to become actively involved in the many facets of the school and to meet other parents. For those parents interested, the meeting will be held on Wednesday 10th November at 5.30pm. Parents/carers can access the meeting through the following link: <https://eduvic.webex.com/meet/barker.christopher.j>

Maths Goal

This week parents will receive their child's maths goal for this term, please take the time to discuss this goal with your child.

COVID 19 vaccination clinic – Friday 5th and Monday 8th November

Please find the information in relation to a vaccination clinic at Ulumbarra Theatre as previously published through email. Note this is purely an opportunity for families should they wish to take it up.

COVID 19 vaccination clinic at Ulumbarra Theatre on Friday 5th and Monday 8th November. This service will be available to staff, students and their family members. Bookings are strictly limited so please book as soon as possible, by using this link: <https://www.bookitlive.net/book/bendigosscollege>

Chris Barker
Principal



Remembrance Day merchandise is for sale in the office from \$1 to \$5.
All proceeds go to supporting returned servicemen and their families.



WELLBEING

Some information this week on local services that are available within our community. We all go through difficult times, and this year has shown that none of us are immune to challenges and the need for support at times.

The Orange Door

57 View Street, Bendigo Ph:1800 512 359

Provides integrated family violence and child wellbeing support across the Loddon region. It is a free service for people of all ages and backgrounds.

www.orangedoor.vic.gov.au

Head to Help

13-19 Helm Street, Kangaroo Flat Ph:1800 595 212

A holistic approach to mental health and wellbeing needs. It's a free service that aims to determine the most appropriate level of support required and connect you to the best service. This may include appointments with a trained mental health professional, practical support and coordination of existing supports (such as your GP) or new supports.

www.headtohelp.gov.au

Anglicare Financial Counselling

10 Mundy Street, Bendigo Ph:1800 809 722

Available to individuals or couples experiencing financial difficulties, including debt, job loss, insurance claims, fines or needing support to manage a budget. It's a free and confidential service that provides information, advice and advocacy.

www.anglicarevic.org.au/what-we-do/strengthening-communities/financial-counselling-services/

Bendigo Foodshare

A local organisation that collects and distributes food through a variety of relief organisations such as Salvation Army, Uniting Care and regional community groups. They have recently conducted a Youth Food Poverty Survey, to better understand the need and impact on poverty and food relief support in the Central Victorian Region. More information on where these are and how to contact them can be found on their Facebook page or website www.bendigofoodshare.org.au

Loddon Campaspe Multicultural Services

120 McCrae Street, Bendigo Ph:5441 6644

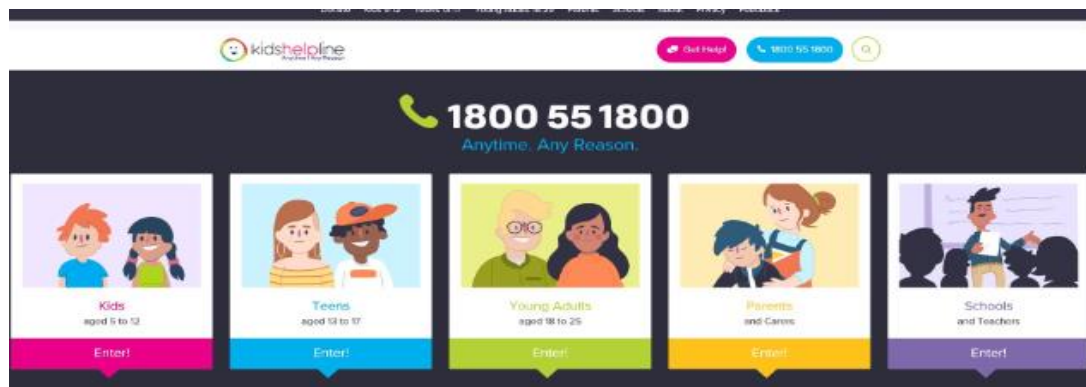
A welcoming not-for-profit organisation that empowers people from migrant and refugee backgrounds to participate fully in Australian society. The service provides a range of community programs including employment, education, family and youth. They also organise and participate in a range of events and workshops.

For more information visit their Facebook page or website www.lcms.org.au

Please contact Mark Lees, the School Wellbeing support person if you have any questions or concerns.

Mark is onsite at school every Thursday.

1976-welfare@schools.vic.edu.au



ASSISTANT PRINCIPAL

Be an Attendance HERO

HERE EVERYDAY READY FOR LEARNING ON TIME



Student absence data for Week 4, ending 28/10/2021



Total number of student absence days Term 4	113 days
Current school absence rate Term 4	0.4 days per student
School absence rate target for 2021	10.00 days per student
Number of times students arriving late to school	37
Number of students with 100% attendance this week	208

Early Bird awards

Well done to everyone who did their best to be at school on time this week ready for learning. The grade with the least amount of late arrivals this week was **/2A**. Great effort & hope to see more grades next week beating the bell.

100% Attendance

At the end of Week 5 we had **236** students with **100%** attendance. This a fantastic effort – keep up the great work!

Trish Johnstone

Assistant Principal



DOGS CONNECT

POLLY'S TWO!

A big HAPPY BIRTHDAY to Polly on Monday this week. Thank you to everyone for making Polly's 2nd birthday so special at Camp Hill!



Polly

FROM THE OFFICE

2022 Booklists

If you choose to order your child's booklist (classroom educational items) from EDPLUS, go to their website: www.edplus.com.au and enter your child/ren's year level code **they will be in next year 2022** (NOT THIS YEAR 2021!) or alternatively if you choose to purchase the items elsewhere, a paper copy of the classroom educational items can be obtained by calling the school office on 54433367.

CODES:

FOUNDATION – CHP1022P

Grade 1 – CHP1122F

Grade 2 – CHP1222G

Grade 3 – CHP1322T

Grade 4 – CHP1422M

Grade 5 – CHP1522X

Grade 6 – CHP1622R

2022 EDPLUS Online Booklist Orders

Edplus online stationery orders – payments can be made when finalising the order online or payment on the Book Collection days in January 2022. All orders need to be completed by Friday 6th December 2021, after this date a late fee of \$5 will apply.

2022 School Fees

Payment for all curriculum contributions will be available on our QKR app early January (a text message will be sent out to remind families) or on the Book Collection days. Payments can be cash and EFTPOS will also be available, however our QKR app is the preferred method.

Parent Payment Policy

Please see attached to this newsletter the Parent Payment Policy and 2022 list of parent payment requests

Booklist Collection Days at Camp Hill in 2022:

Thursday 20th January 2022 from 9am - 4pm

Friday 21st January 2022 from 9am - **12noon**

Sue Heider - Business Manager

BREAKFAST CLUB



FOUNDATION LEARNING TEAM

Thank You

A huge thank you to all of our Prep A families who were absolute superstars during our recent return to Remote Learning. We enjoyed daily WebEx sessions together, including a special Halloween Dress Up session, but are super excited to be back at school. We wish the recovering student and their family all the best as they complete their isolation.



Jet's Gymnastics

We are really looking forward to returning to Jet's Gym next Friday to continue our sessions. We will be attending on Friday 12th, 19th and 26th from 10:30 - 11:30am. Please ensure your child wears appropriate clothing on these days. Thank you to the parent helpers who have volunteered to accompany us.

Foundation Learning Team

1/2 LEARNING TEAM

Year 2 Camp

We have been given the wonderful news that our year 2 camp can go ahead! We will be heading off to Echuca on Monday 29th November and returning the following day on Tuesday 30th. Students will receive this week further information relating to the camp including an itinerary, what to bring and consent and medical forms.

Breakfast Club

Beginning this Friday there will be a breakfast club in the BER building! The Breakfast Club will run each Friday between 8:10am and 8:30am.

1/2 Learning Team



3/4 LEARNING TEAM

Wacky Walk-a-Fun

We had so much fun participating in our Wacky Walk-a-Fun today. It was great to see so many children dressed up in their wacky clothing. Huge thanks to everyone who supported this event with their donations. Stay tuned for some more photos in next week's newsletter.

Inquiry Project

A reminder that students have taken home their home learning Inquiry project plans and will be working on these at home for the next few weeks. These will be presented at school in Week 9. We can't wait to see the imaginative designs students come up with!

Mask Wearing

We are so proud of the maturity our students have displayed in regard to mask wearing. Keep up the great work Grade 3/4s!

3/4 Learning Team



5/6 LEARNING TEAM

Wacky Thursday!

A huge thank you to all the families that donated for our Wacky Walk-a-Fun, with the last two years being impacted due to covid our fundraising team greatly appreciates your efforts. It was a lovely last wacky dress up for our Grade 6 students.

5/6 Learning Team

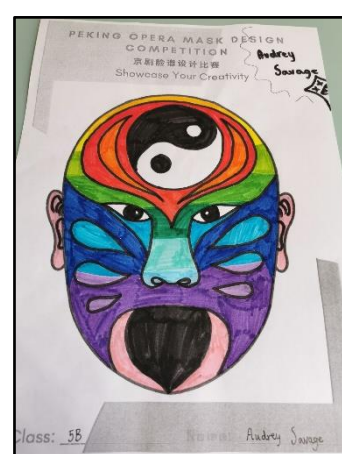
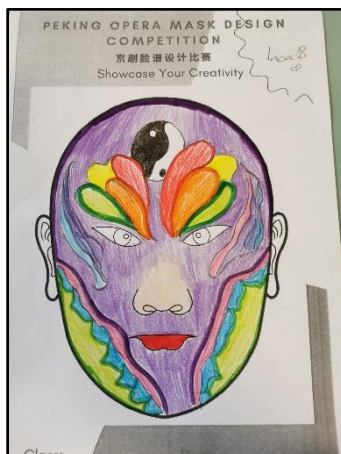
LOTE

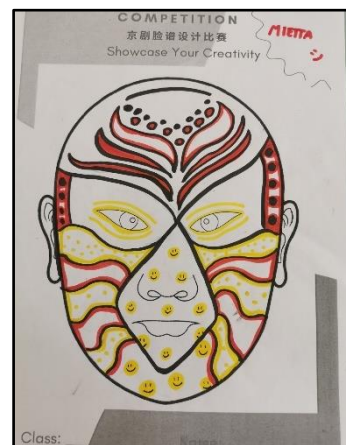
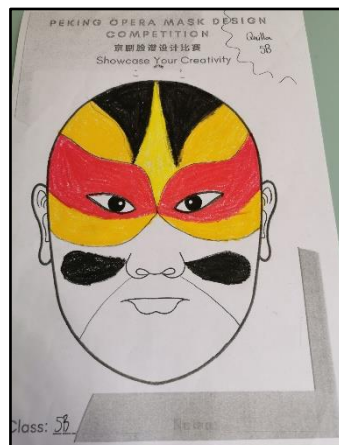
Bendigo Chinese Language Teachers Network have announced the launch of the 2021 Chinese Language Participation Weeks which aims to encourage, celebrate and showcase Bendigo students' language learning. After we introduced these engaging learning activities, a lot of students have expressed their interest in participating in these activities to showcase their best capabilities, confidence and creative ideas.

If your children have been sent home the permission forms for you to sign. More information on 2021 Chinese Language Participation Weeks, please go to this web site, where you can have detailed information about each activities and tutorial videos to get your children ready for this Chinese language event, please go to:

<https://relieved-library-fcd.notion.site/Showcase-Your-Chinese-Language-Skills-937114d05fd245d9b5d4b68d743c9ece>

Below are some of our confident students showcasing their creative ideas in one of the activities called Peking Opera Mask Design.





Yimin Chen
LOTE Coordinator

PERFORMING ARTS

Covid Safe

Grade 3-4 and 5-6 classes are having classes outside on the turf. The Prep-2 students are working in the gym with doors and windows open for ventilation.

Prep

Students are working on their country music performance

Grade 1-2

Students are working on their Jazz music performance.

Grade 3-4

Students are working on their Rock N roll performance as well as practising for their recorder assessment. The recorder songs and the assessment is on google classroom for students to access from home.

Grade 5-6

Students are working through drama exercises, and a Pop music performance.

Short Circus students are practising for a class performance.

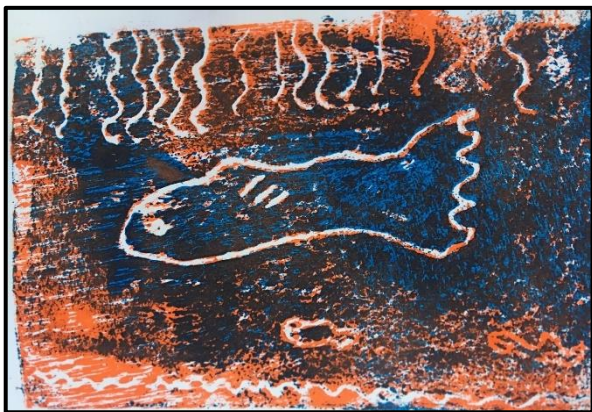
Mary Thorpe

Performing Arts Coordinator

ART

Students in Grades 1 and 2 completed some wonderful prints using foam sheets to engrave their designs. They experimented with adding more lines between colours. The topic was our ocean as we have been talking about how to keep our oceans and waterways free of plastic. Here are some effective ones by students in 1/2B.





*Sandy McLennan
Art Coordinator*

HEALTHY EATING

Please do not send lollies and chocolate to school. This week I have seen students eating lollypops in class and eating chocolate for lunch. Students need healthy food to focus and have energy for the long hours of learning and active play.

*Sandy McLennan
Healthy Eating Coordinator*



LEAP – LEARNING EXTENSION ADDITIONAL PROGRAM

Trick Shot Competition

The winner will be announced at the assembly this Friday. Keep your ears peeled to see if you are the lucky winner! Mrs Dixon will catch up with the winner on Monday morning for the students to collect their prizes.

Thank you for your entries, remember you have to be in it to win it!!!

*Kristy Dixon
High Abilities Practise Leader*



GREEN TEAM

Plants Stall & Grow Cups

For sale at the school gate on Wednesdays in November from 3:10 pm. \$1/ \$2 each, cash or pay on QKR.

Funds raised will be split between the school Sustainable Centre and The Sea Shepherd Marine Debris Campaign which cleans up rubbish in Australia's waterways.

Congratulations to Prep B Mazzarella who won the MAD Monday Trophy last week.

*Sandy McLennan & Mary Thorpe
Green Team*



SUSHI LUNCH ORDER FOR FRIDAY 12TH NOVEMBER 2021

ORDER VIA OUR QKR APP!!!!

Please return money and orders by 9.00am Thursday 11th November, 2021.

No late orders accepted.

Sushi \$3.50 – Crispy chicken, Teriyaki chicken, Vegetarian, Cooked Tuna

Name..... Grade.....

Vegetarian..... Crispy chicken..... Teriyaki chicken..... Cooked Tuna

Name..... Grade.....

Vegetarian..... Crispy chicken..... Teriyaki chicken..... Cooked Tuna

Total

CAMP HILL PRIMARY SCHOOL

Developing and nurturing lifelong learners



Dear parent/guardian,

Camp Hill Primary School is looking forward to another great year of teaching and learning and would like to advise you of Camp Hill Primary School's voluntary financial contributions for 2022.

Schools provide students with free instruction to fulfil the standard Victorian curriculum and we want to assure you that all contributions are voluntary. Nevertheless, the ongoing support of our families ensures that our school can offer the best possible education and support for our students. We want to thank you for all your support, whether that's through fundraising or volunteering your time. This has made a huge difference to our school and the programs we can offer.

The environment and resources that we enjoy today represent the contributions made by our parent/carer community over many years. Parent/Carers voluntary contributions make significant difference to the quality of our programs. This financial support ensures that we can continue to provide the excellent range of facilities and resources for your children. Your support in 2022 will allow us to:

- Provide high quality programs and specific subject materials and equipment for: English, Mathematics, Science, Art, Music, Inquiry, Language and PE, Sustainable Garden, Short Circus and LEAP (Student Excellence Program).
- Maintain and develop the school grounds and play equipment.
- Ensure the upkeep of our computer devices to enhance learning opportunities.
- Maintain sufficient class sets of books for students to develop their reading skills.
- Provide hands on maths equipment e.g.: measuring materials for teaching purposes.
- Facilitate Literacy and Mathematics online digital subscriptions.
- Deliver a range of sporting equipment.
- Arrange for individual student supplies and class bulk supplies.
- Offer effective First Aid for all students.

Our School Council is proud of the excellent quality of our facilities and resources available for our students to enjoy and few schools match the numerous programs we offer to cater for students' needs and interests.

For further information on the Department's Parent Payments Policy please see a one-page overview attached.

Yours sincerely,

Chris Barker
Principal

Kerry Noonan
School Council President

Financial Support for Families

Camp Hill Primary School understands that some families may experience financial difficulty and offers a range of support options, including:

- *the Camps, Sports and Excursions Fund – (CSEF)*
- *Secondhand uniforms located in school foyer*
- *State School Relief – (SSR)*
- *Local community support groups*
- *Bendigo & District Aboriginal Coop – (BDAC)*

For a confidential discussion about accessing these services, or if you would like to discuss alternative payment arrangements, contact:

Sue Heider - Business Manager, Trish Johnstone - Assistant Principal and/or Chris Barker - Principal
on Ph: 03 54433367 or Email: camp.hill.ps@education.vic.gov.au

Payment methods

QKR app is the preferred method of payment on Book Collection days (or throughout the year):

Book Collection days: Thursday 20th January 2022 from 9am – 4pm or Friday 21st January 2022 from 9am – 12noon.

EFTPOS available at office or cash/cheque accepted.

Refunds

Parent requests for refunds are subject to the discretion of the school and made on a case-by-case basis. Refunds will be provided where the school deems it is reasonable and fair to do so, taking into consideration whether a cost has been incurred, the Department's Parent Payment Policy and Guidance, Financial Help for Families [Policy](#) and any other relevant information.

PARENT PAYMENTS POLICY

ONE PAGE OVERVIEW



FREE INSTRUCTION

- Schools provide students with free instruction and ensure students have free access to all items, activities and services that are used by the school to fulfil the standard curriculum requirements in Victorian Curriculum F-10, VCE and VCAL.
- Schools may invite parents to make a financial contribution to support the school.



PARENT PAYMENT REQUESTS

Schools can request contributions from parents under three categories:

Curriculum Contributions

Voluntary financial contributions for curriculum items and activities which the school deems necessary for students to learn the Curriculum.

Other Contributions

Voluntary financial contributions for non-curriculum items and activities that relate to the school's functions and objectives.

Extra-Curricular Items and Activities

Items and activities that enhance or broaden the schooling experience of students and are above and beyond what the school provides for free to deliver the Curriculum. These are provided on a user-pays basis.

- Schools may also invite parents to supply or purchase educational items to use and own (e.g. textbooks, stationery, digital devices).



FINANCIAL HELP FOR FAMILIES

- Schools put in place financial hardship arrangements to support families who cannot pay for items or activities so that their child doesn't miss out.
- Schools have a nominated parent payment contact person(s) that parents can have a confidential discussion with regarding financial hardship arrangements.



SCHOOL PROCESSES

- Schools must obtain school council approval for their parent payment arrangements and publish all requests and communications for each year level on their school website for transparency.

Curriculum Contributions - items and activities that students use, or participate in, to access the Curriculum	Amount
<u>FOUNDATION:</u>	
<i>Booklist – classroom educational items Edplus</i>	<i>See booklist</i>
<i>Art - classroom consumables, materials & equipment</i>	<i>\$15.00</i>
<i>Mathematics - classroom consumables, materials & equipment</i>	<i>\$20.00</i>
<i>English - classroom consumables, materials & equipment</i>	<i>\$20.00</i>
<i>Inquiry (including Science & Sustainability) – project consumables, materials & equipment</i>	<i>\$35.00</i>
<i>ICT Devices – provision and maintenance of devices from the shared classroom sets</i>	<i>\$50.00</i>
<i>Essential Assessments – Numeracy & Literacy online program</i>	<i>\$14.00</i>
<i>Physical Education: Jets Gym & Swimming (date to be scheduled)</i>	<i>\$ TBC</i>
<i>Major Excursion - Melbourne (date to be scheduled)</i>	<i>\$ TBC</i>
TOTAL	<u>\$154.00</u> + Excursions

Booklist - Classroom Educational items for students to own

The school recommends classroom educational items to be purchase directly from **EDPLUS** for your child to individually own and use. Go to website: @ www.edplus.com.au
You may choose to purchase these items from another supplier.

Other Contributions – for Non-curriculum activities	Amount
Dogs Connect – Student wellbeing program	\$10.00

Tax deductible contributions:	Amount
Building Fund: A tax-deductible contribution to support renovations, upgrades, and maintenance of school infrastructure.	\$

Curriculum Contributions - items and activities that students use, or participate in, to access the Curriculum	Amount
<u>Grade 1</u>	
<i>Booklist – classroom educational items Edplus</i>	<i>See booklist</i>
<i>Art - classroom consumables, materials & equipment</i>	<i>\$15.00</i>
<i>Mathematics - classroom consumables, materials & equipment</i>	<i>\$20.00</i>
<i>English - classroom consumables, materials & equipment</i>	<i>\$20.00</i>
<i>Inquiry (including Science & Sustainability) – project consumables, materials & equipment</i>	<i>\$35.00</i>
<i>ICT Devices - provision of devices from the shared classroom sets and online digital subscriptions</i>	<i>\$50.00</i>
<i>Essential Assessments - Numeracy & Literacy online program</i>	<i>\$14.00</i>
<i>Physical Education Activities: Jets Gym & Swimming (to be scheduled)</i>	<i>\$ TBC</i>
TOTAL	<u>\$154.00</u> + Excursions

Booklist - Classroom Educational items for students to own

The school recommends classroom educational items to be purchased directly from EDPLUS for your child to individually own and use. Go to website: @ www.edplus.com.au

You may choose to purchase these items from another supplier.

Other Contributions – for Non-curriculum activities	Amount
Dogs Connect – Student wellbeing program	\$10.00

Extra-Curricular Items and Activities:	Amount
<i>Camp Hill Primary School offers a range of items and activities that enhance or broaden the schooling experience of students and are above and beyond what the school provides in order to deliver the Curriculum. These are provided on a user-pays basis.</i>	
<i>Year 1 Evening (date to be scheduled)</i>	<i>\$ TBC</i>

Tax deductible contributions:	Amount
<i>Building Fund: A tax-deductible contribution to support renovations, upgrades, and maintenance of school infrastructure.</i>	<i>\$</i>

Curriculum Contributions - items and activities that students use, or participate in, to access the Curriculum	Amount
<u>Grade 2:</u>	
<i>Booklist – classroom educational items Edplus</i>	<i>See booklist</i>
<i>Art - classroom consumables, materials & equipment</i>	<i>\$15.00</i>
<i>Mathematics - classroom consumables, materials & equipment</i>	<i>\$20.00</i>
<i>English - classroom consumables, materials & equipment</i>	<i>\$20.00</i>
<i>Inquiry (including Science & Sustainability) – project consumables, materials & equipment</i>	<i>\$35.00</i>
<i>ICT Devices - provision of devices from the shared classroom sets and online digital subscriptions</i>	<i>\$50.00</i>
<i>Essential Assessments - Numeracy & Literacy online program</i>	<i>\$14.00</i>
<i>Physical Education Activities: Jets Gym & Swimming (to be scheduled)</i>	<i>\$ TBC</i>
TOTAL	<u>\$154.00</u> + Excursions

Booklist - Classroom Educational items for students to own

The school recommends classroom educational items to be purchase directly from EDPLUS for your child to individually own and use. Go to website: @ www.edplus.com.au

You may choose to purchase these items from another supplier.

Other Contributions – for Non-curriculum activities	Amount
Dogs Connect – Student wellbeing program	\$10.00

Extra-Curricular Items and Activities:	Amount
<i>Camp Hill Primary School</i> offers a range of items and activities that enhance or broaden the schooling experience of students and are above and beyond what the school provides <u>in order to</u> deliver the Curriculum. These are provided on a user-pays basis.	
<i>Grade 2 Camp (date to be scheduled)</i>	<i>\$ TBC</i>

Tax deductible contributions:	Amount
<i>Building Fund: A tax-deductible contribution to support renovations, upgrades, and maintenance of school infrastructure.</i>	<i>\$</i>

Curriculum Contributions - items and activities that students use, or participate in, to access the Curriculum	Amount
Grade 3:	
<i>Booklist – classroom educational items Edplus</i>	<i>See booklist</i>
<i>Art - classroom consumables, materials & equipment</i>	<i>\$15.00</i>
<i>Mathematics - classroom consumables, materials & equipment</i>	<i>\$20.00</i>
<i>English - classroom consumables, materials & equipment</i>	<i>\$20.00</i>
<i>Inquiry (including Science & Sustainability) – project consumables, materials & equipment</i>	<i>\$35.00</i>
<i>ICT Devices - provision of devices from the shared classroom sets and online digital subscriptions</i>	<i>\$50.00</i>
<i>Essential Assessments - Numeracy & Literacy online program</i>	<i>\$14.00</i>
<i>Physical Education: Jets Gym & Athletics, Cross Country & Swimming (date to be scheduled)</i>	<i>\$ TBC</i>
TOTAL	<u>\$154.00</u> + Excursions

Booklist - Classroom Educational items for students to own

The school recommends classroom educational items to be purchase directly from **EDPLUS** for your child to individually own and use.

Go to website: @ www.edplus.com.au

You may choose to purchase these items from another supplier.

Other Contributions – for Non-curriculum activities	Amount
Dogs Connect – Student wellbeing program	\$10.00

Extra-Curricular Items and Activities:	Amount
<i>Camp Hill Primary School</i> offers a range of items and activities that enhance or broaden the schooling experience of students and are above and beyond what the school provides <u>in order to</u> deliver the Curriculum. These are provided on a user-pays basis.	
<i>Grade 3/4 Camp (date to be scheduled)</i>	<i>\$ TBC</i>

Tax deductible contributions:	Amount
<i>Building Fund: A tax-deductible contribution to support renovations, upgrades, and maintenance of school infrastructure.</i>	<i>\$</i>

Curriculum Contributions - items and activities that students use, or participate in, to access the Curriculum	Amount
Grade 4:	
<i>Booklist – classroom educational items Edplus</i>	<i>See booklist</i>
<i>Art - classroom consumables, materials & equipment</i>	<i>\$15.00</i>
<i>Mathematics - classroom consumables, materials & equipment</i>	<i>\$20.00</i>
<i>English - classroom consumables, materials & equipment</i>	<i>\$20.00</i>
<i>Inquiry (including Science & Sustainability) – project consumables, materials & equipment</i>	<i>\$35.00</i>
<i>ICT Devices - provision of devices from the shared classroom sets and online digital subscriptions</i>	<i>\$50.00</i>
<i>Essential Assessments - Numeracy & Literacy online program</i>	<i>\$14.00</i>
<i>Physical Education: Jets Gym & Athletics, Cross Country & Swimming (date to be scheduled)</i>	<i>\$ TBC</i>
TOTAL	<u>\$154.00</u> + Excursions

Booklist - Classroom Educational items for students to own

The school recommends classroom educational items to be purchase directly from EDPLUS for your child to individually own and use. Go to website: @ www.edplus.com.au
You may choose to purchase these items from another supplier.

Other Contributions – for Non-curriculum activities	Amount
Dogs Connect – Student wellbeing program	\$10.00

Extra-Curricular Items and Activities:	Amount
<i>Camp Hill Primary School offers a range of items and activities that enhance or broaden the schooling experience of students and are above and beyond what the school provides in order to deliver the Curriculum. These are provided on a user-pays basis.</i>	
<i>Grade 3/4 Camp (date to be scheduled)</i>	<i>\$ TBC</i>

Tax deductible contributions:	Amount
<i>Building Fund: A tax-deductible contribution to support renovations, upgrades, and maintenance of school infrastructure.</i>	<i>\$</i>

Curriculum Contributions - items and activities that students use, or participate in, to access the Curriculum	Amount
Grade 5:	
<i>Booklist – classroom educational items Edplus</i>	<i>See booklist</i>
<i>Art - classroom consumables, materials & equipment</i>	<i>\$15.00</i>
<i>Mathematics - classroom consumables, materials & equipment</i>	<i>\$20.00</i>
<i>English - classroom consumables, materials & equipment</i>	<i>\$20.00</i>
<i>Inquiry (including Science & Sustainability) – project consumables, materials & equipment</i>	<i>\$35.00</i>
<i>ICT Devices - provision of devices from the shared classroom sets and online digital subscriptions</i>	<i>\$50.00</i>
<i>Essential Assessments - Numeracy & Literacy online program</i>	<i>\$14.00</i>
<i>Physical Education: Jets Gym & Athletics, Cross Country & Swimming (to be scheduled)</i>	<i>\$ TBC</i>
<i>Major Excursion - Melbourne (date to be scheduled)</i>	<i>\$ TBC</i>
TOTAL	<u>\$154.00</u> <u>+ Excursions</u>

Booklist - Classroom Educational items for students to own

The school recommends classroom educational items to be purchased from **EDPLUS** for your child to individually own and use. Edplus Booklist is also attached to this document.

Go to website: @ www.edplus.com.au select your child's year level code for 2022 (not 2021): **CHP0521P**

You may choose to purchase these items from another supplier.

Other Contributions – for Non-curriculum activities	Amount
Dogs Connect – Student wellbeing program	\$10.00

Extra-Curricular Items and Activities:	Amount
<i>Camp Hill Primary School</i> offers a range of items and activities that enhance or broaden the schooling experience of students and are above and beyond what the school provides <u>in order to deliver the Curriculum</u> . These are provided on a user-pays basis.	
<i>Years 5 & 6 End of year Breakup day (date to be scheduled)</i>	<i>\$ TBC</i>

Tax deductible contributions:	Amount
<i>Building Fund: A tax-deductible contribution to support renovations, upgrades, and maintenance of school infrastructure.</i>	<i>\$</i>

Curriculum Contributions - items and activities that students use, or participate in, to access the Curriculum	Amount
Grade 6:	
<i>Booklist – classroom educational items Edplus</i>	<i>See booklist</i>
<i>Art - classroom consumables, materials & equipment</i>	<i>\$15.00</i>
<i>Mathematics - classroom consumables, materials & equipment</i>	<i>\$20.00</i>
<i>English - classroom consumables, materials & equipment</i>	<i>\$20.00</i>
<i>Inquiry (including Science & Sustainability) – project consumables, materials & equipment</i>	<i>\$35.00</i>
<i>ICT Devices - provision of devices from the shared classroom sets and online digital subscriptions</i>	<i>\$50.00</i>
<i>Essential Assessments - Numeracy & Literacy online program</i>	<i>\$14.00</i>
<i>Physical Education: Jets Gym & Athletics, Cross Country & Swimming (to be scheduled)</i>	<i>\$ TBC</i>
<i>Major Excursion - Melbourne (date to be scheduled)</i>	<i>\$ TBC</i>
TOTAL	<u>\$154.00</u> <u>+ Excursion</u>

Booklist - Classroom Educational items for students to own

The school recommends classroom educational items to be purchase from **EDPLUS** for your child to individually own and use. Go to website: @ www.edplus.com.au

You may choose to purchase these items from another supplier.

Other Contributions – for Non-curriculum activities	Amount
Dogs Connect – Student wellbeing program	\$10.00

Extra-Curricular Items and Activities:	Amount
<i>Camp Hill Primary School</i> offers a range of items and activities that enhance or broaden the schooling experience of students and are above and beyond what the school provides <u>in order to</u> deliver the Curriculum. These are provided on a user-pays basis.	
<i>Years 5 & 6 End of year Breakup (date to be scheduled)</i>	<i>\$ TBC</i>
<i>Year 6 Graduation Ceremony & Dinner (date to be scheduled)</i>	<i>\$ TBC</i>

Tax deductible contributions:	Amount
Building Fund: A tax-deductible contribution to support renovations, upgrades, and maintenance of school infrastructure.	\$